



WAG-A

Vertical Break Switch

For maximum load current requirements, the ultimate vertical break switch is required.

Southern States WAG-A vertical break switch defines robustness. This switch with its massive parts has been called upon by customers for over 35 years for the most demanding applications requiring the ultimate in reliability. The WAG-A switch is available for all air break switch applications.

BENEFITS

- Meets all ANSI standards
- Field-proven to deliver the maximum reliability
- It's specifically designed for heavy duty use while providing maintenance-free, trouble-free service
- Easy installation
- Suitable for horizontal upright, vertical, or underhung mounting

SPECIFICATIONS

Maximum Voltage Rating

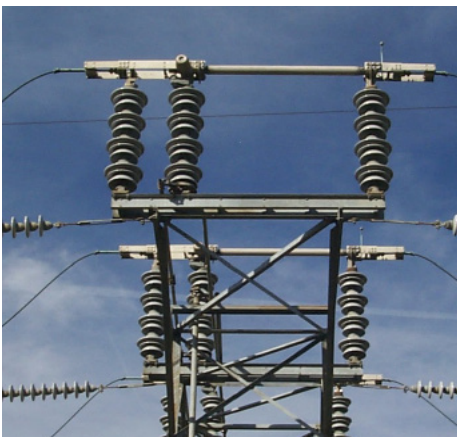
15.5 kV – 170 kV

Continuous Current Rating

4000 A - 6500A

WAG-A

Vertical Break Switch



RATINGS

Maximum Voltage Rating (kV)							
15.5	27	38	48.3	72.5	123	145	170
BIL (kV)							
110	150	200	250	350	550	650	750

ADDITIONAL RATINGS

Rated Power Frequency	60 Hz	
Continuous Current	4000 A	5000 A - 6500 A
Short-Time Symmetrical Withstand (3 Sec)	75 kA RMS	89 kA RMS
Peak Withstand	195 kA	231 kA
Ambient Temperature Rating	-40°C to +50° Standard -50°C Optional	

KEY FEATURES

- Hinge current transfer via reverse loop contact fingers with silver-to-silver current transfer surfaces
- 6 hole NEMA terminal pads
- Reverse loop jaw contact fingers with silver-to-silver current transfer surfaces
- Double channel base design
- Maintenance free bearings
- Can be furnished with a wide variety of accessories

Additional Applications

- Line disconnecting
- Line sectionalizing
- Isolation of other substation equipments (circuit breakers, circuit switchers, power transformers, etc)
- Bypassing other substation equipment
- Bus tie positions
- Line dropping/bus dropping/cable dropping/magnetizing current interrupting (when furnished with appropriate arcing horns)